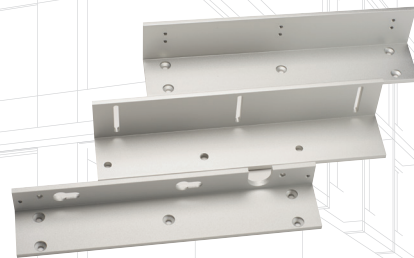
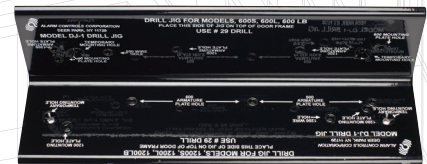
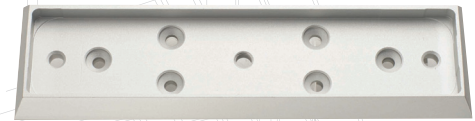


Magnetic Lock Accessories

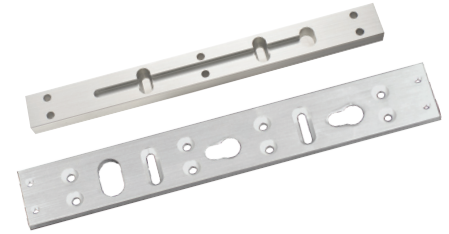


Magnetic Lock Accessories

Drop Down Plates for Single Locks

Spacer plates for single magnetic locks

PART NUMBER	DESCRIPTION	DIMENSIONS	FINISH
AM3300	1/2" spacer for 600 lb. lock	9-7/8"L x 1"W x 1/2"D	Clear anodized (US28)
AM3305	5/8" spacer for 600 lb. lock	9-7/8"L x 1"W x 5/8"D	Clear anodized (US28)
AM3330	1/4" spacer for 600 lb. lock	9-7/8"L x 1"W x 1/4"D	Clear anodized (US28)
AM6300	1/2" spacer for 1200 lb. lock	10-1/2"L x 1-1/2"W x 1/2"D	Clear anodized (US28)
AM6305	5/8" spacer for 1200 lb. lock	10-1/2"L x 1-1/2"W x 5/8"D	Clear anodized (US28)
AM6330	1/4" spacer for 1200 lb. lock	10-1/2"L x 1-1/2"W x 1/4"D	Clear anodized (US28)



Drop Down Plates for Double Locks

Spacer plates for double magnetic locks

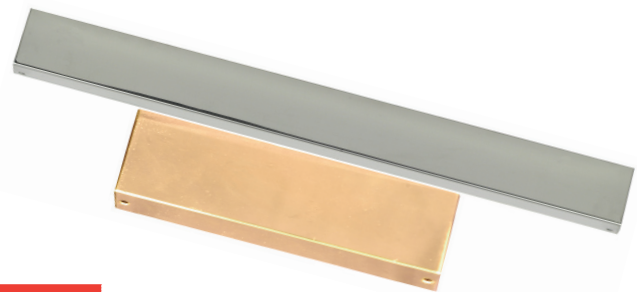
PART NUMBER	DESCRIPTION	DIMENSIONS	FINISH
AM3331	1/4" spacer for 600 lb. lock	19-3/4"L x 1"W x 1/4"D	Clear anodized (US28)
AM3332	1/2" spacer for 600 lb. lock	19-3/4"L x 1"W x 1/2"D	Clear anodized (US28)
AM6331	1/4" spacer for 1200 lb. lock	21"L x 1-1/2"W x 1/4"D	Clear anodized (US 28)
AM6332	1/2" spacer for 1200 lb. lock	21"L x 1-1/2"W x 1/2"D	Clear anodized (US 28)



DUC Dress Covers

For 600 and 1200 lbs Magnetic Locks

- For both single and double magnetic locks
- Easy to install and retrofit existing installations
- Available with Polished Brass and Polished Chrome finishes
- Painted finishes available for all dress covers



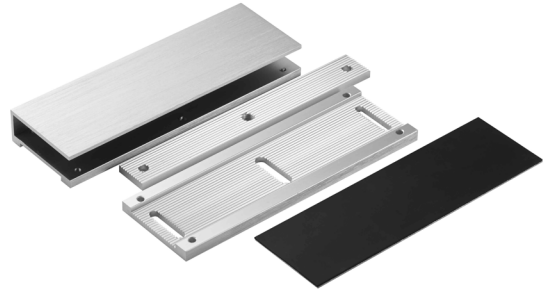
PART NUMBER	DESCRIPTION
DUC-1B/DUC-1C	600S Magnetic Lock Dress Cover, Polished Brass (B) or Chrome (C)
DUC-2B/DUC-2C	600L Magnetic Lock Dress Cover, Polished Brass (B) or Chrome (C)
DUC-3B/DUC-3C	600LB Magnetic Lock Dress Cover, Polished Brass (B) or Chrome (C)
DUC-4B/DUC-4C	600D Magnetic Lock Dress Cover, Polished Brass (B) or Chrome (C)
DUC-5B/DUC-5C	600DLB Magnetic Lock Dress Cover, Polished Brass (B) or Chrome (C)
DUC-6B/DUC-6C	1200S Magnetic Lock Dress Cover, Polished Brass (B) or Chrome (C)
DUC-7B/DUC-7C	1200L Magnetic Lock Dress Cover, Polished Brass (B) or Chrome (C)
DUC-8B/DUC-8C	1200LB Magnetic Lock Dress Cover, Polished Brass (B) or Chrome (C)
DUC-9B/DUC-9C	1200D Magnetic Lock Dress Cover, Polished Brass (B) or Chrome (C)

Magnetic Lock Accessories

GDH Glass Door Holder

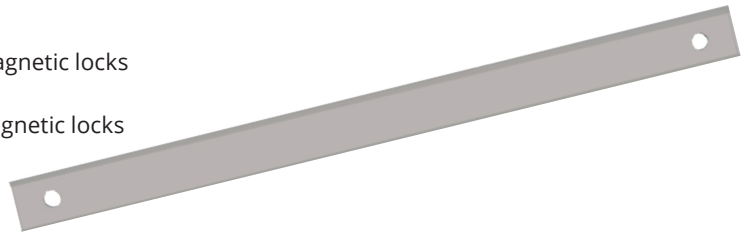
For 600 and 1200 lbs Magnetic Locks

- Size: 7-5/16" L x 1-3/8" W x 2-1/2" H
- Glass thickness: 1/2" – 5/8"
- Minimum clearance between top of door and door header: 13/64"
- Armature adjustment range: 1"
- Compression mounts armature on frameless glass doors
- Clear anodized (US28) standard finish



Filler Plates

- AM6360: 5/8" filler plate for all 600 and 1200 series magnetic locks
 - Size: AM6360: 10-1/2" L x 3/4" W x 5/8" Thick
- AM6361: 1/2" filler plate for all 600 and 1200 series magnetic locks
 - Size: AM6361: 10-1/2" L x 3/4" W x 1/2" Thick
- Clear Anodized (US28) standard finish



Installation Tools

- **DJ-1** Magnetic Lock Installation Drill Jig
 - Designed for accurate and fast installation of magnetic locks
 - Compatible with: 600S, 600LB, 1200S, 1200LB



DJ-1

Jack Nuts

Provide a reliable and secure method for mounting magnetic locks in metal door frames that are 3/16" thick or less. During installation the body of the jack nut collapses on the back side to form legs which grip the inside of the mounting surface.

- **JN-1 Jack Nut Tool Kit**
 - Jack nut tool kit includes the following: Jack nut installation tool, 25/64" drill bit, 5M mandrel installed in installation tool, 50-5M jack nuts, 50-5M x .75" flat head Phillips machine screws, 1 each of 3M, 4M and 6M mandrel, Metal tool box (holds all items)
 - **JN-50 Pack of 50 (also available separately)**

(Grey metal box shown;
actual metal box is white)



JN-1

Magnetic Lock Accessories

L Brackets

Fixed Single and Double Lock Brackets; Adjustable Single Lock Mounting Brackets

- Fixed single lock L brackets for 600 or 1200 lbs magnetic locks;
Option to include cover.
- Adjustable single lock L bracket for 600 or 1200 lbs magnetic locks
- Fixed double lock L bracket for 600 and 1200 double magnetic locks
- For Duranodic finish US40 (Dark Bronze), please contact the factory



PART NUMBER	DESCRIPTION	DIMENSIONS	FINISH
Fixed Single Lock Brackets:			
AM3320	1/4" L bracket for 600 Series locks	9-7/8" L x 1" x 1-1/2"	Clear anodized (US28)
AM3320C	L bracket for 600 Series single magnetic locks with cover		Clear anodized (US28)
AM6320	5/16" L bracket for 1200 Series locks with cover	10-1/2" L x 1-1/2" x 1"	Clear anodized (US28)
AM6320C	L bracket for 1200 Series single magnetic locks with cover		Clear anodized (US28)
Adjustable Single Lock Brackets:			
AM3325	3/16" adjustable L bracket for 600 Series locks	9-7/8" L x 1-7/8" x 1-3/16"	Clear anodized (US28)
AM6325	1/4" adjustable L bracket for 1200 Series locks	10-1/2" L x 2-5/16" x 2-5/16"	Clear anodized (US28)
Fixed Double Lock Brackets:			
AM3326	5/16" L bracket for 600D and 600DLB Series double locks	19-3/4" L x 1-1/2" x 1"	Clear anodized (US28)
AM6326	1/4 L bracket for 1200D Series double locks	21" L x 1" x 1-1/2"	Clear anodized (US28)



Z Brackets

Decorative Z Bracket with Integrated Dress Cover

- Adjustable mounting bracket for 600 or 1200 lbs Series Single Magnetic Locks
- For use on in-swinging doors
- **AM3370C** for magnetic lock models: 600S, and 600LB
 - Adjustment range: 2" - 2.75"
 - Bracket dimensions: 10" L x 3.5" H
- **AM6370C** for magnetic lock models: 1200S and 1200LB
 - Adjustment range: 2.375" - 3.5"
 - Bracket dimensions: 10.625" L x 4.25" H
- For Duranodic finish US40 (Dark Bronze), please contact the factory



PART NUMBER	DESCRIPTION	FINISH
Z Bracket for 600 Series Single Magnetic Locks		
AM3370	Z bracket for 600 Series single magnetic locks	Clear anodized (US28)



Magnetic Lock Accessories

Z Brackets

Decorative Z Bracket with Integrated Dress Cover

PART NUMBER	DESCRIPTION	FINISH
Z Bracket for 600 Series Single Magnetic Locks		
AM3370C	Z bracket with integrated dress cover for 600 Series single magnetic locks	Clear anodized (US28)
Z Brackets for 600 Series Double Magnetic Locks		
AM3375	Z bracket for 600 Series double magnetic locks	Clear anodized (US28)
Z Brackets for 1200 Series Single Magnetic Locks		
AM6370	Z bracket for 1200 Series single magnetic locks	Clear anodized (US28)
AM6370C	Z bracket with integrated dress cover for 1200 Series single magnetic locks	Clear anodized (US28)
Z Brackets for 1200 Series Double Magnetic Locks		
AM6375	Z bracket for 1200 Series double magnetic locks	Clear anodized (US28)



Armature and Mounting Plates

PART NUMBER	DESCRIPTION	DIMENSIONS	FINISH
Armature housing for use on freezer and extra thick doors:			
AM3310	Armature housing for 600 Series	7-7/8"L x 2-1/8"W x 5/8"D	Clear anodized (US28)
AM6310	Armature housing for 1200 Series	8-1/4"L x 3"W x 5/8"D	Clear anodized (US28)
Armature plate for 600 and 1200 Series Magnetic Plates:			
AM3335	Armature plate for 600 Series	7-1/4"L x 1-7/16"W x 9/16"D	Clear anodized (US28)
AM6335A	Armature plate for 1200LB, 1200D	7-1/2"L x 2-5/16"W x 5/8"D	Clear anodized (US28)
Offset armature plate for 600 and 1200 Series Magnetic Plates:			
AM6338	Offset armature for 1200 Series	7-1/2"L x 2-5/16"W x 5/8"D	Clear anodized (US28)
Armature Spacer for 600 and 1200 Series:			
AM3315	1/4" armature spacer for 600 and 1200 Series magnetic locks. Supplied with armature plate mounting hardware. Can be used to mount plate on thick doors	19-3/4"L x 1-1/2" x 1"	Clear anodized (US28)

